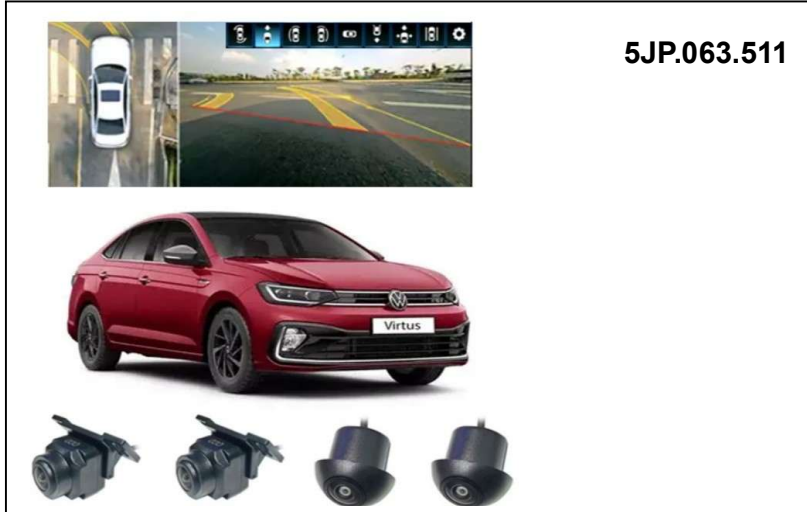




Zubehör für Volkswagen
Accessories for Volkswagen
Accessoires pour Volkswagen
フォルクスワーゲン・アクセサリ

360 Degree camera



Montageanleitung
Installation instructions
Instructions de montage
Instrucciones de montaje
Istruzioni di montaggio
Montage-aanwijzing
Monteringsanvisning
Instruções de montagem
Instrukcja montażu
Montážní návod

取付説明書

装配手册

Инструкция по монтажу

Änderungen des Lieferumfanges vorbehalten.

Design and specifications subject to change without notice.

Sous réserve de modifications.

Se reservan las modificaciones respecto al volumen de suministro.

Ci riserviamo il diritto di apportare modifiche al contenuto della fornitura.

Wijzigingen in leveringsomvang voorbehouden.

Ändringar av leverans-omfattningen förbehålles.

Reservado o direito a alterações do material fornecido.

Zastrzegamy sobie prawo zmian zakresu dostawy.

Změny rozsahu dodávky vyhrazeny.

仕様および内容は予告なく変更する場合があります。

供货范围可能发生改变。

Возможны изменения

комплекта поставки.

Virtus 2022 →

This Kit is applicable only for GT/GT PLUS, GT LINE, TOP LINE, HIGH LINE variant's of Virtus.

Note :

We recommend that the fitting is carried out by an authorized workshop of SAVW.

Fitment/Removal of car parts to be done as per Elsa pro system guideline only.

Disclaimer :

The routing of the wiring harness for the 360-degree camera system is standardized and common across Skoda & VW vehicle models. Accordingly, the images and illustrations provided in this fitment manual are for representative purpose only. Please note that the variations will be occurred in the fitment locations of the ECU, as well as the front and rear cameras. Installers are advised to refer to vehicle-specific guidelines & take necessary fitment steps accordingly.

General Instruction :

1. For the calibration of the 360-degree camera system, the use of the designated calibration mat (Part No.: **LOC-063-511-CL-MAT**) is mandatory.
2. Please note that this calibration mat is **not included** in the camera kit and must be **ordered separately** by the dealership based on requirement.
3. **A single calibration mat can be reused for multiple vehicle fitments.** Therefore, it is **not necessary to order a separate mat for each fitment.**
4. Dealerships are advised to maintain one or more mats as shared tools to support efficient calibration across multiple installations.

Distributed By :- **SKODA AUTO VOLKSWAGEN INDIA PVT LTD**

Printed in India

Version 01






SR NO	Included in the kit	QTY
1	ECU/Junction Box	1
2	Left camera extension cable	1
3	Right camera extension cable	1
4	Rear camera extension cable	1
5	Front camera extension cable	1
6	32Pin Control Cord	1
7	Camera	4
8	Tie Cable.	6
9	SAWW Dedicated Power Cable	1
10	Extra rubber caps	2
11	Remote	1
12	Screws	1 pack
13	Hole saw (2 in 1) 22.5mm+8mm	2 pcs
14	2 Way Tape	3 pcs
15	Sensors	1 set
16	ORVM template	1 set
17	Hole Saw 2mm	1 pcs
18	Silicone Sealant	1
19	Remote Sensor Tape	1
20	CR2032 Lithium Battery 3V	1
21	Cleaning Alcohol Swab	1

Distributed By :- **SKODAAUTO VOLKSWAGEN INDIA PVT LTD**

Printed in India

Version 01 



STEP 1 :- REMOVE FULL DASH BOARD PANEL AS PER THE SERIES DISASSEMBLY PROCESS



STEP 2 :- REMOVE AMBIENT LIGHT CONNECTOR FROM MULTIMEDIA/INFOTAINMENT



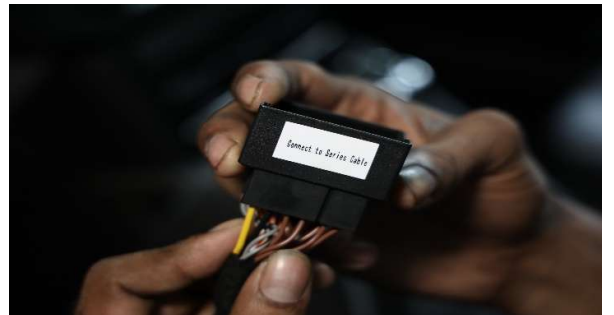
STEP 3:- INSERT PINS AND DISCONNECT MULTIMEDIA/INFOTAINMENT LOCK



STEP 4 :- REMOVE THE SERIES MULTIMEDIA/INFOTAINMENT AS PER SERIES DISSEMBLY PROCESS



STEP 5 :- DISCONNECT ALL SERIES CABLE FROM MULTIMEDIA/INFOTAINMENT



STEP 6 :- CONNECT SAVW DEDICATED POWER CABLE (PART-9) TO THE SERIES CABLE AS PER STICKERS ON THE PART

Distributed By :- **SKODA AUTO VOLKSWAGEN INDIA PVT LTD**

Printed in India





STEP 7 :- CONNECT THE OTHER END OF (PART 9) TO THE SERIES MULTIMEDIA/INFOTAINMENT AS SHOWN ON THE STICKER.



STEP 8 :- TAKE THE 32 PIN CONTROL CORD (PART NO 6)



STEP 9 :- TAKE THE 3RD END OF THE SAVV DEDICATED POWER CABLE (PART 9)



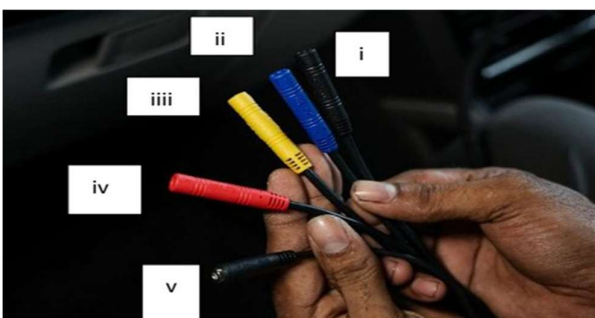
STEP 10 :- CONNECT THE 2 SOCKETS AS MENTIONED ON THE PARTS STICKER



STEP 11 :- TAKE THE 32 PIN CONTROL POWER CORD



STEP 12 :- CONNECT IT TO JUNCTION / ECU BOX AS SHOWN



STEP 13 :- THESE ARE THE CAMERA CONNECTORS (i) FRONT CAMERA (ii) RIGHT CAMERA (iii) REAR CAMERA (iv) LEFT CAMERA (v) SENSOR CONNECTOR



STEP 14 :- CONNECT THE 4 CAMERAS (AS MARKED BY THE STICKERS) TO THE CAMERA CORD AS MARKED IN STEP 13

Distributed By :- **SKODA AUTO VOLKSWAGEN INDIA PVT LTD**

Printed in India

Version 01





STEP 15 :- FUNCTION CHECK ALL THE CAMERAS HAVE POWER ON INFOTAINMENT.



STEP 16 :- DISCONNECT ALL THE CAMERA CABLES



STEP 17 :- OPEN GLOVE BOX AS PER SERIES PROCESS



STEP 18 :- UNSCREW PLASTIC PART AS SHOWN.



STEP 19 :- OPEN DASH BOARD SIDE TRIM.



STEP 20:- UNPLUG THE CONNECTOR



STEP 21 :- ROUTE SAVV DEDICATED POWER CABLE (PART 9) FROM THE BACK OF THE MULTIMEDIA/INFOTAINMENT TO THE GLOVE BOX AREA AS SHOWN



STEP 24 :- ROUTE SAVV DEDICATED POWER CABLE (PART 9) FROM BACK OF THE MULTIMEDIA/INFOTAINMENT TO THE GLOVE BOX AREA AS SHOWN



STEP 25 :- ROUTE SAVV DEDICATED POWER CABLE (PART 9) FROM THE BACK OF THE MULTIMEDIA/INFOTAINMENT TO GLOVE BOX AREA AS SHOWN



STEP 26 :- CONNECT THE 32 PIN CONTROL CORD (PART 6) WITH SAVV DEDICATED POWER CABLE (PART 9) AS STEP 10



STEP 27 :-CONNECT THE OTHER END OF 32 PIN CONTROL CORD (PART 6) TO JUNCTION /ECU BOX (PART 1) AS STEP 10



STEP 28 :- REMOVE THE DOOR TRIM AS PER SERIES PROCESS

Distributed By :- **SKODA AUTO VOLKSWAGEN INDIA PVT LTD**

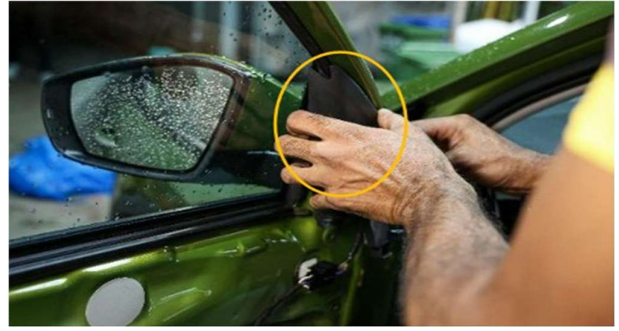
Printed in India

Version 01





STEP 29 :- DISCONNECT ALL CONNECTORS ON THE DOOR PANEL



STEP 30 :- REMOVE THE LEFT AND RIGHT ORVM TRIM COVERS AS PER SERIES PROCESS



STEP 31 :- DISCONNECT THE ORVM CONNECTORS



STEP 32:- REMOVE THE LEFT AND RIGHT ORVM's CAREFULLY AS PER SERIES PROCESS.



STEP 33 :- REMOVE ORVM CAP FROM THE LEFT AND RIGHT ORVM's.



STEP 34 :- ALIGN THE ORVM TEMPLATES (PART 16) AS SHOWN



STEP 35 :- DRILL THE HOLE USING HOLE SAW 22.5 MM (PART 13) AS PER MARKINGS GIVEN ON THE TEMPLATE.



STEP 36 :- INSERT LEFT AND RIGHT CAMERA IN ORVMs RESPECTIVELY WITH RUBBER COVER/CAP ON THE CAMERA.



STEP 37 :- ROUTE THE CABLES THROUGH SPACE MARKED (FOR CLEAR DEMONSTRATION KINDLY REFER TO THE INSTALLATION VIDEO)



STEP 38 :- REMOVE THE FOAM PART



STEP 39 :- REMOVE THE COVER



STEP 40 :- ROUTE CABLES AS SHOWN FROM RUBBER GROMMET

Distributed By :- **SKODA AUTO VOLKSWAGEN INDIA PVT LTD**

Printed in India

Version 01





STEP 41 :- CONNECT THE LEFT AND RIGHT ORVM's AND ROUTE CABLES AS SHOWN.



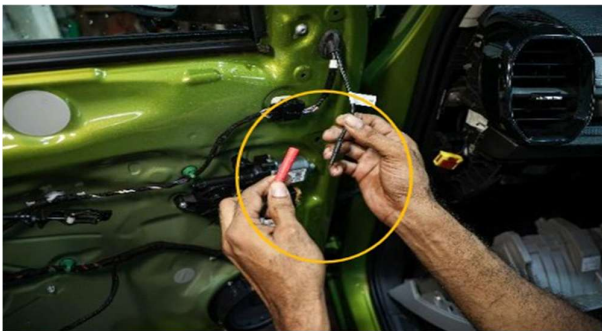
STEP 42 :- CONNECT THE RUBBER CAPS PROPERLY



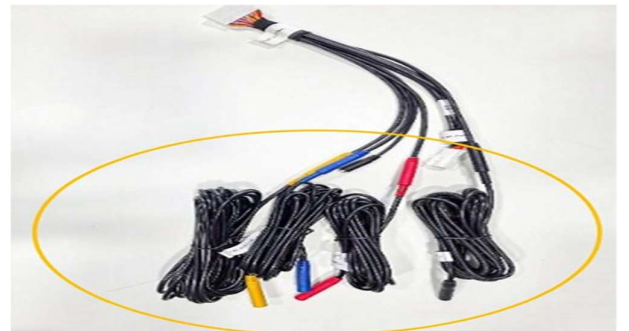
STEP 43 :- CONNECT ORVM's CONNECTOR



STEP 44 :- LOCK CONNECTORS AS PER SERIES FITTING



STEP 45 :- CONNECT LEFT CAMERA TO LEFT EXTENSION CABLE AS SHOWN DOOR PANEL



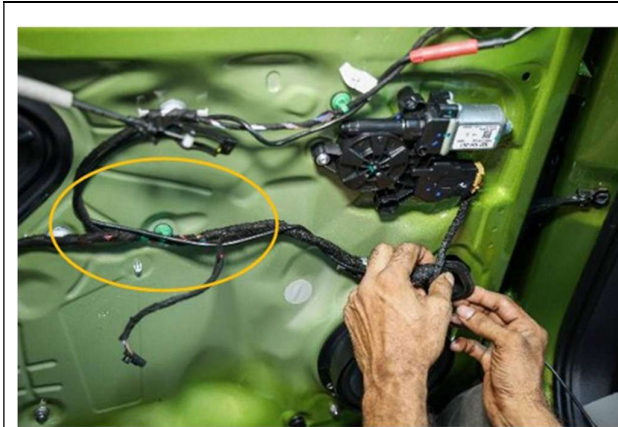
STEP 46 :- OVERVIEW OF ALL 4 CAMERA EXTENSION CABLE. (PART 2,3,4,5) CONNECT ONE END OF THE EXTENSION CABLE TO THE RESPECTIVE CAMERA AND THE OTHER END TO 32 PIN CONTROL CORD(PART 6) AS SHOWN.

Distributed By :- **SKODA AUTO VOLKSWAGEN INDIA PVT LTD**

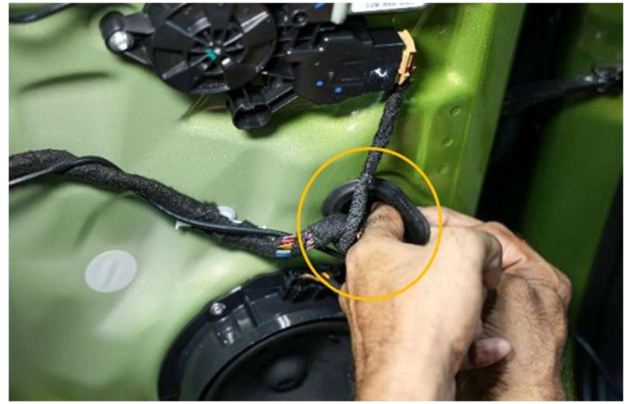
Printed in India

Version 01

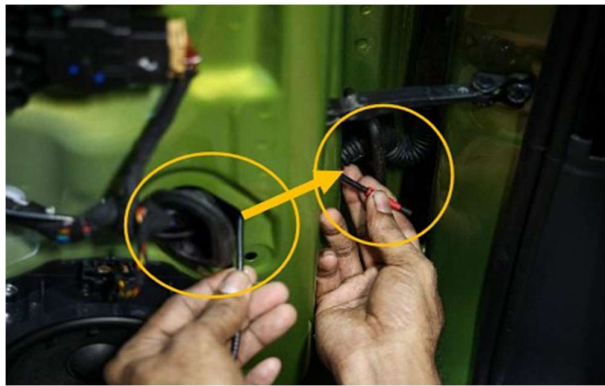




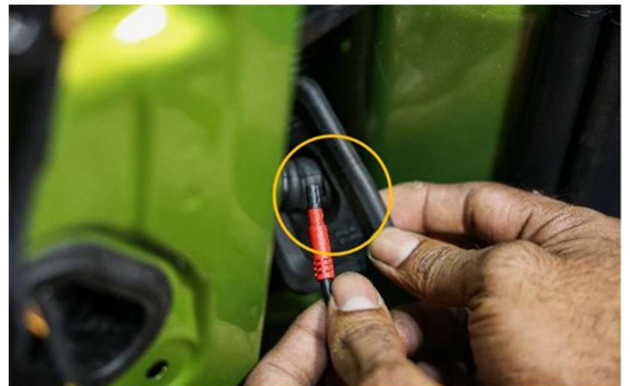
STEP 47 :- ROUTE THE EXTENTION CABLE WITH THE SERIES CABLE.



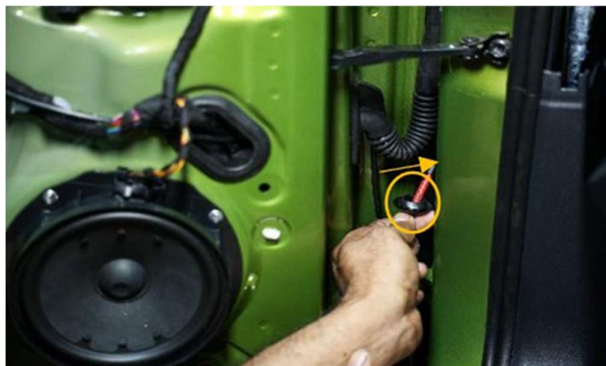
STEP 48 :- ROUTE EXTENTION CABLE THROUGH THE RUBBER GROMMET AS SHOWN IN STEP 47.



STEP 49 :- ROUTE CABLE FROM THE RUBBER SLEEVES TO THE AREA SHOWN IN THE IMAGE (ROUTE DELICATELY)



STEP 50 :- ROUTE CABLE THROUGH THE RUBBER PART AS SHOWN




STEP 51 :- AFTER ROUTING CABLE THROUGH THE RUBBER GROMMET, PASS IT THROUGH THE BODY HOLE GIVEN FOR THE SERIES HARNESS

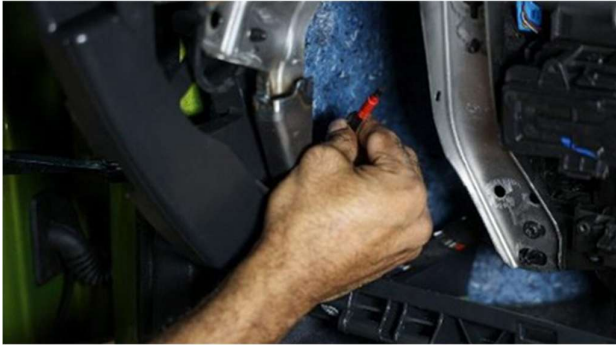


STEP 52 :- AFTER ROUTING THROUGH THE HOLE, PULL ALL THE EXCESS CABLE GENTLY

Distributed By :- **SKODA AUTO VOLKSWAGEN INDIA PVT LTD**

Printed in India

Version 01 



STEP 53 :- KEEP THE EXTENTION CABLE CONNECTOR NEAR THE GLOVE BOX AREA.



STEP 54 :- REPEAT THE SAME PROCESS ON THE RIGHT DOOR, ROUTE EXTENTION CABLE AS MARKED.



STEP 55 :- REMOVE THE FUSE BOX COVER AS PER SERIES PROCESS



STEP 56 :- ROUTE CABLE AS SHOWN.



STEP 57 :- ROUTE CABLE AS SHOWN UNDERNEATH STEERING COLLUMN.



STEP 58 :- PASS THE CABLE TILL THE JUNCTION BOX AREA, JUST LIKE STEP 56



STEP 59 :- FITMENT OF FUSE BOX COVER BACK, AS PER SERIES PROCESS



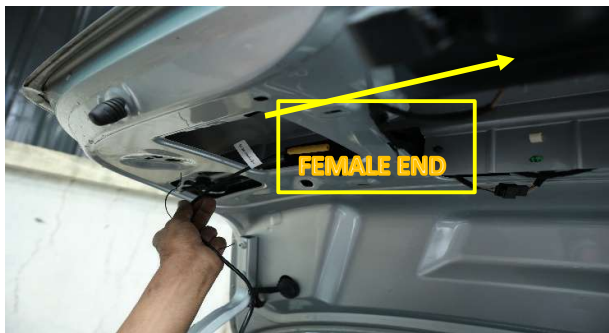
STEP 60 :- ASSEMBLE DOOR TRIM OF THE LEFT AND RIGHT DOOR + OVRM AS PER SERIES PROCESS AFTER ENSURING ALL ELECTRICAL CONNECTIONS.



STEP 61 :- REMOVE THE TAILGATE PLASTIC TRIM AS PER SERIES PROCESS



STEP 62 :- TAKE REAR EXTENTION CABLE (PART 4) FOR ROUTING)



STEP 63:- ROUTE FEMALE END REAR EXTENTION CABLE (YELLOW) IN THE BOOT CAVITY AND PASS THE REST OF THE CABLE TILL GLOVEBOX AREA



STEP 64 :- ROUTE EXTENSION CABLE YELLOW (PART 4) FROM THE BOOT AREA TO GLOVE AREA.



STEP 65 :- ROUTE EXTENTION CABLE YELLOW (PART 4) MALE END AS SHOWN FROM HOLES IN TAIL GATE.



STEP 66 :- ROUTE CABLE AS SHOWN FROM HOLES IN TAIL GATE.



STEP 67 :- ROUTE EXTENTION CABLE YELLOW (PART 4) MALE END THROUGH THE RUBBER SLEEVE



STEP 68 :- ROUTE EXTENTION CABLE YELLOW (PART 4) MALE END AS SHOWN FROM C-PILLAR




STEP 69 :- ROUTE EXTENTION CABLE YELLOW (PART 4) MALE END AS SHOWN FROM C-PILLAR

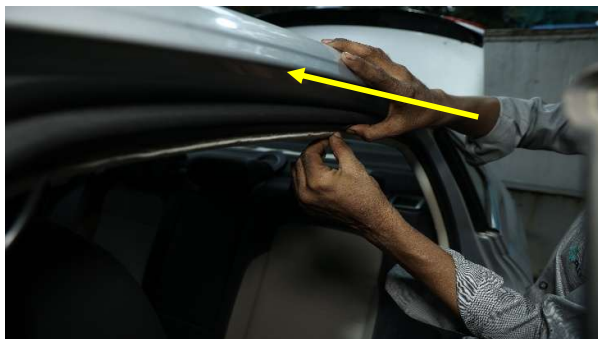


STEP 70 :- ROUTING CABLE THROUGH THE ROOF LINER FROM REAR DOOR TO FRONT DOOR.

Distributed By :- **SKODAAUTO VOLKSWAGEN INDIA PVT LTD**

Printed in India

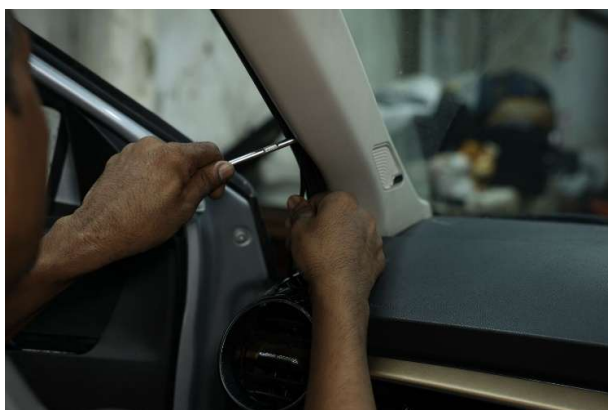
Version 01 



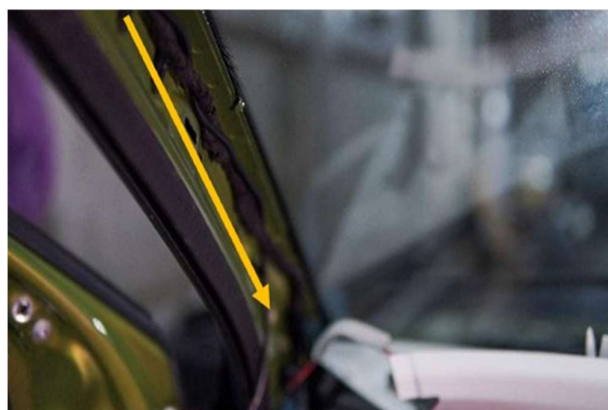
STEP 71 :- ROUTE EXTENTION CABLE YELLOW (PART 4) MALE END WILL PASS THROUGH THE ROOF LINER.



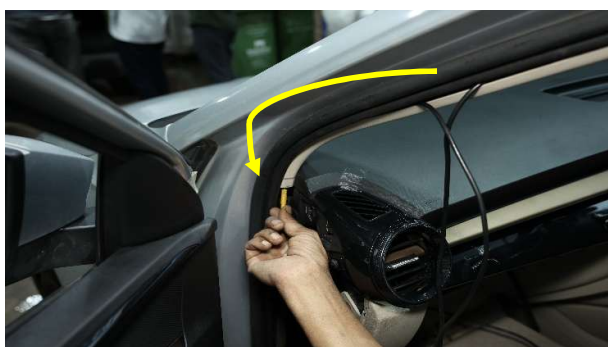
STEP 72 :- ROUTING CABLE THROUGHOUT THE ROOF LINER FROM B-PILLAR TO A-PILLAR.



STEP 73 :- DISMANTLE A-PILLAR TRIM AS PER SERIES PROCESS.



STEP 74 :- ROUTE CABLE UNDERNEATH A-PILLAR.




STEP 75 :- ROUTE CABLE UNDERNEATH THE A-PILLAR.

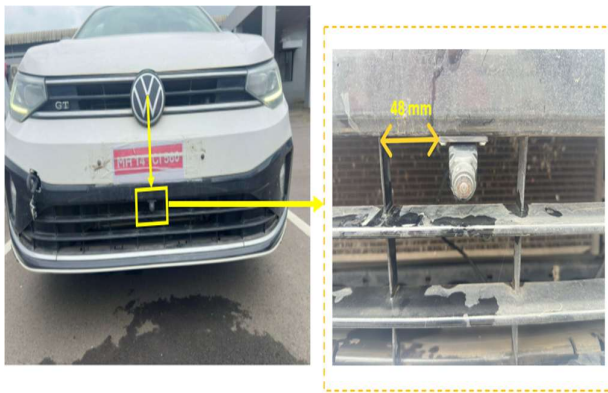


STEP 76 :- BRING CABLE NEAR THE GLOVEBOX AREA FOR NEXT CONNECTIONS.

Distributed By :- **SKODA AUTO VOLKSWAGEN INDIA PVT LTD**

Printed in India

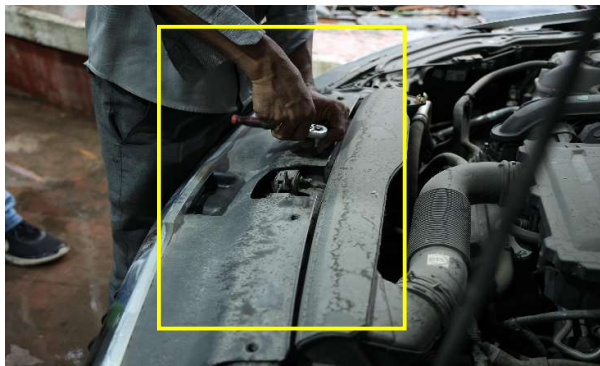
Version 01 



STEP 77 :- CAMERA TO BE PLACED AS SHOWN ABOVE REPRESENTATION – MATCH CENTER LINE WITH CAR LOGO (VW) AND TO BE FITTED IN FRONT BUMPER RIBS BY MAINTAINING DISTANCE AS SHOWN IN ABOVE IMAGE.



STEP 78 :- PLACE THE FRONT CAMERA AS PER STEP 76, FIT THE CAMERA WITH SELF TAPPING SCREW (PART NO. 12)



STEP 79 :- REMOVE THE BUMPER INSERT COVER NEAR THE ENGINE BAY, AS PER SERIES PROCESS.



STEP 80 :- TAKE FRONT EXTENSION CABLE (PART NO 5)



STEP 81 :- CONNECT THE FRONT CAMERA (PART 7) AND FRONT EXTENSION CABLE (PART 5)



STEP 82 :- ROUTE FRONT EXTENSION CABLE (PART 5) THROUGH EDGES OF THE ENGINE BAY

Distributed By :- **SKODA AUTO VOLKSWAGEN INDIA PVT LTD**

Printed in India

Version 01

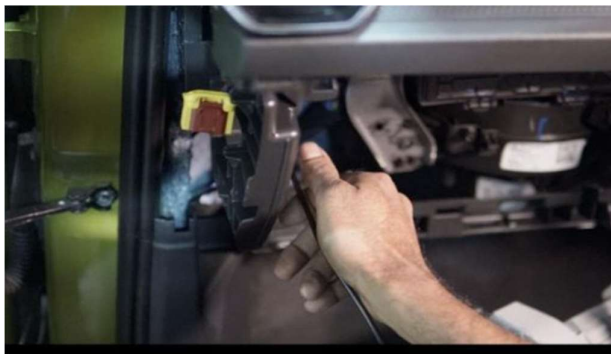




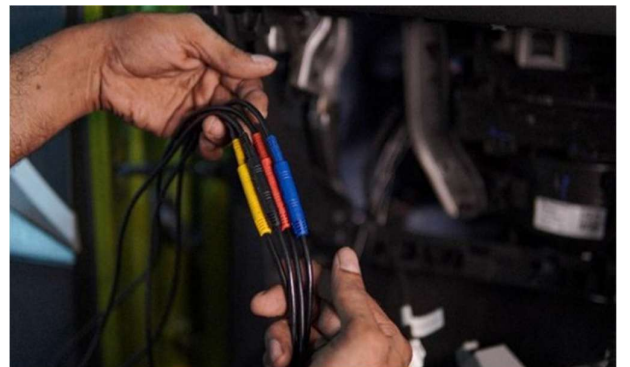
STEP 83 :- ROUTE CABLES AS MARKED (KINDLY REFER TO THE VIDEO IF ANY CONFUSION)



STEP 84 :- ROUTE CABLE THROUGH RUBBER SLEEVE AND THE GLOVEBOX AREA (KINDLY REFER TO THE VIDEO IF ANY CONFUSION).



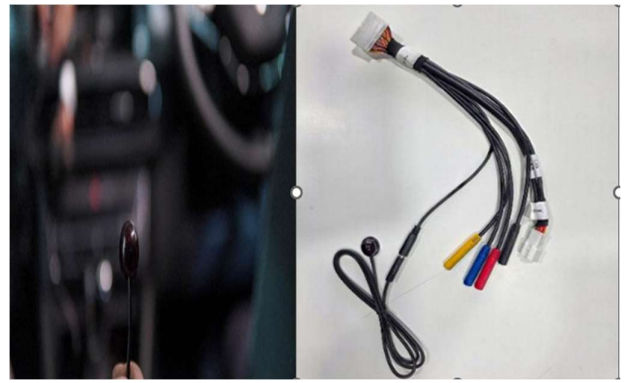
STEP 85 :- PASS THE CABLE THROUGH RUBBER SEAL AND THE GLOVEBOX ARE (KINDLY REFER TO THE VIDEO IF ANY CONFUSION).



STEP 86 :- CONNECT ALL 4 CAMERA EXTENTION CABLES (PART 2,3,4,5)TO THE 32 PIN CONTROL CORD (PART 6) AS SHOWN.




STEP 87 :- REINSTALL THE BUMPER INSERT COVER NEAR ENGINE BAY AS PER SERIES PROCESS.



STEP 88 :- CONNECT THE REMOTE SENSOR (PART 15) TO 32 PIN POWER CONTROL CORD (PART 6) AS SHOWN AFTER CONNECTING THE SENSOR CABLE, PASS THE CABLE

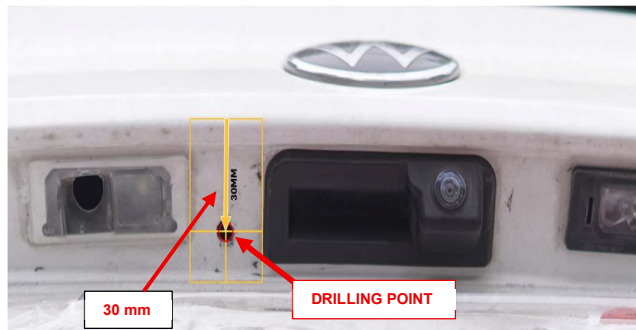
Distributed By :- **SKODA AUTO VOLKSWAGEN INDIA PVT LTD**

Printed in India

Version 01 



STEP 89 :- CLEAN THE AREA HIGHLIGHTED WITH THE ALCOHOL SWAB THAT IS PROVIDED AND WAIT FOR 1 MINUTE THEN, STICK THE REMOTE SENSOR, AS ABOVE LOCATION AS SHOWN.



STEP 90 :- MEASURE THE LENGTH OF 30 mm FROM TOP AS SHOWN



STEP 91 :- AFTER REMOVING 22.5 MM BIT (PART NO. 13), A SMALLER BIT 8 MM IS REVEALED. PLACE IT ON THE DRILL MACHINE



STEP 92 :- DRILL A HOLE AS PER MARKED LOCATION IN STEP 95. PAINT TOUCH UP TO AVOID RUSTING IF REQUIRED.




STEP 93 :- ROUTE REAR CAMERA CABLE (PART NO 7) THROUGH THE HOLE. PAINT TOUCH UP TO AVOID RUSTING IF REQUIRED



STEP 94 :- DRILL 2 SMALL HOLES WITH THE SMALLER HOLESAW(PART 17) 2MM TO FIX THE 2 SCREWS (PART NO 12) FOR REAR CAMERA.

Distributed By :- **SKODA AUTO VOLKSWAGEN INDIA PVT LTD**

Printed in India

Version 01 



STEP 95 :- SCREW (PART NO 12) AND FIX THE REAR CAMERA. (PART NO 7). COVER THE EXTRA SPACE IF ANY LEFT FROM THE REAR CAMERA HOLE WITH THE SILICONE SEALANT PROVIDED TO PREVENT WATER INGRESS.



STEP 96 :- CONNECT REAR CAMERA TO THE REAR EXTENTION CABLE.



STEP 97 :- TIE ANY EXCESS CABLE WITH TIE CABLE (PART 6)



STEP 98 :- RE-ASSEMBLE TAILGATE TRIM AS PER SERIES PROCESS




STEP 99 :- TIE ANY EXCESS CABLES WITH TIE CABLE. (PART 6)NEAR THE GLOVE BOX

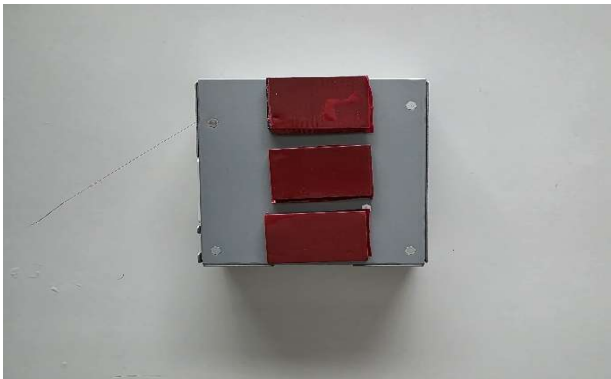


STEP 100 :- PLACE THE CABLES AS PER THE MARKED LOCATION.

Distributed By :- **SKODA AUTO VOLKSWAGEN INDIA PVT LTD**

Printed in India

Version 01 



STEP 101 :- STICK THE DSA TAPE (PART NUMBER 14) ON THE JUNCTION BOX AS SHOWN



STEP 102 :- STICK THE JUNCTION BOX (PART NO 1) ON THE TOP PART OF THE GLOVE BOX.



STEP 103 :- FITMENT OF MULTIMEDIA/INFOTAINMENT AS PER SERIES PROCESS



STEP 104 :- CONNECT THE DASHBOARD PANEL BACK.



STEP 105 :- CHECK THE MULTIMEDIA/INFOTAINMENT IF THE DISPLAY IS CORRECTLY DISPLAYED.



STEP 106 :- MEASURE FROM THE TYRE 35 INCHES AND ALIGN THE MAT 35 INCHES FROM THE BOTH FRONT TYRES. MAT HAS TO BE PLACED. (PLEASE REFER TO THE VIDEO FOR REFERENCE).

Distributed By :- **SKODA AUTO VOLKSWAGEN INDIA PVT LTD**

Printed in India

Version 01





STEP 107 :- PLACE THE MAT CAREFULLY IN ORDERLY WAY TO THE LEFT SIDE OF THE CAR, THE MAT SHOULD REMAIN STRAIGHT/PARALLEL TO THE CAR.



STEP 108 :- PLACE THE MAT CAREFULLY IN ORDERLY WAY TO THE RIGHT SIDE OF THE CAR, THE MAT SHOULD REMAIN STRAIGHT/PARALLEL TO THE CAR.



STEP 109 :- OFFSET WILL BE WRITTEN ON THE MAT, PLACE REAR MAT EXACTLY ON 1.0 ON BOTH SIDES, THE REAR MAT SHOULD BE PLACED PARALLELLY TO THE CAR.



STEP 110 :- AS SHOWN THE REAR MAT IS PLACE EXACTLY ON 1.0 (KINDLY REFER TO THE VIDEO FOR BETTER UNDERSTANDING)



STEP 111 :- MAKE SURE THE MAT IS STRAIGHT/FLAT FROM ALL SIDES AND NOT FOLDED



STEP 112 :- OVERVIEW OF THE MAT SETUP – EQUALLY ALIGNED ON ALL 4 SIDES (PUT SMALL WEIGHTED OBJECT ON THE MAT IN ORDER TO RESTRICT MOVEMENT OF THE MAT)

Distributed By :- **SKODA AUTO VOLKSWAGEN INDIA PVT LTD**

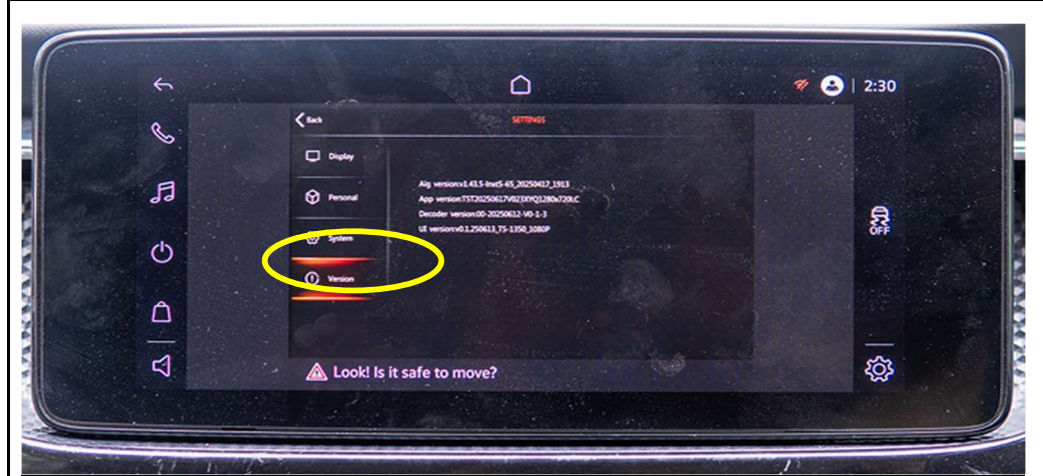
Printed in India

Version 01





STEP 113 :- GO TO SETTINGS AFTER PUTTING THE PASSWORD WHICH IS ONLY AVAILABLE AT THE DEALERSHIP.



STEP 114 :- SCROLL DOWN TO "VERSION" TAB AND CLICK ON IT 5 TIMES CONTINUOUSLY

Distributed By :- **SKODA AUTO VOLKSWAGEN INDIA PVT LTD**

Printed in India

Version 01





STEP 115 :- CLICK ON CALIBRATION



STEP 116 :- CLICK ON THE SECOND OPTION IN AUTOMATIC SECTION AS MARKED.

Distributed By :- **SKODA AUTO VOLKSWAGEN INDIA PVT LTD**

Printed in India




STEP 117 :- CHOOSE OFFSET AS MARKED ON STEP --,ITS 1.0 FOR VIRTUS, THEN CLICK ON "OK" AS SHOWN

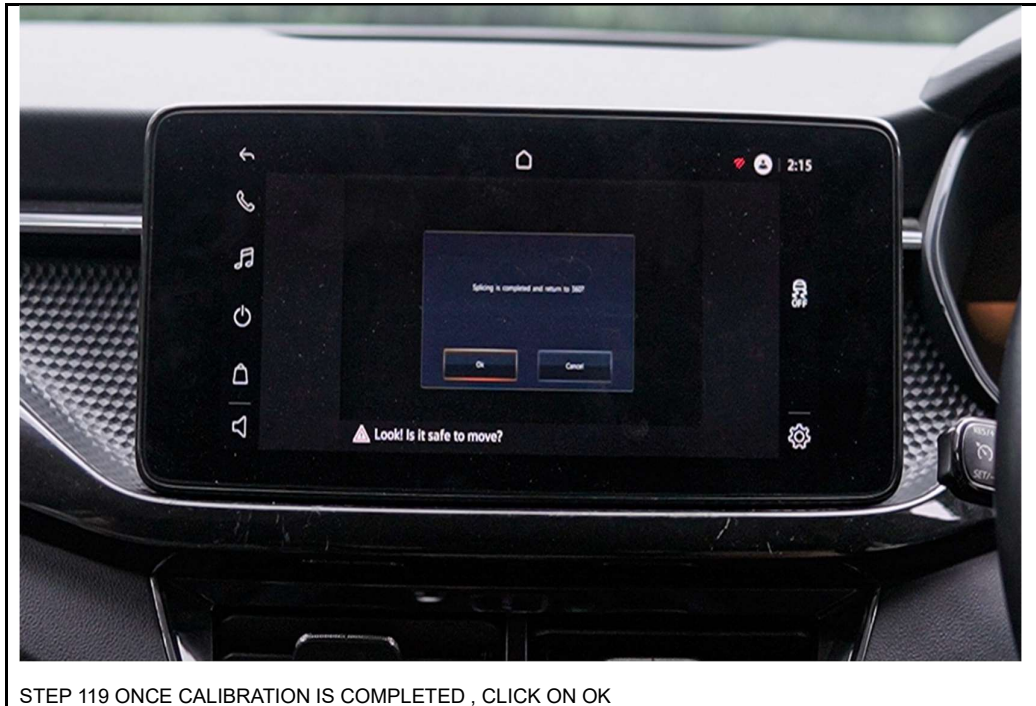


STEP 118 :- AUTO CALIBRATION WILL START, WILL TAKE AROUND 20 SECONDS.

Distributed By :- **SKODA AUTO VOLKSWAGEN INDIA PVT LTD**

Printed in India

Version 01 




STEP 119 ONCE CALIBRATION IS COMPLETED , CLICK ON OK

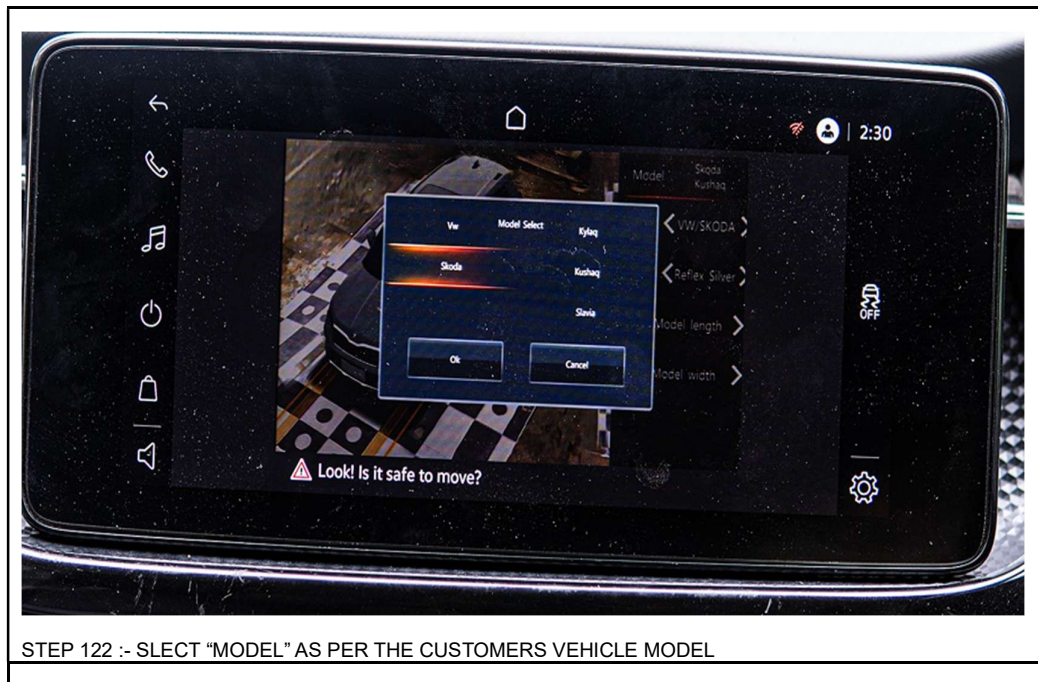


STEP 120 : CLICK ON DISPLAY > CAR MODEL.

Distributed By :- **SKODAAUTO VOLKSWAGEN INDIA PVT LTD**


Printed in India

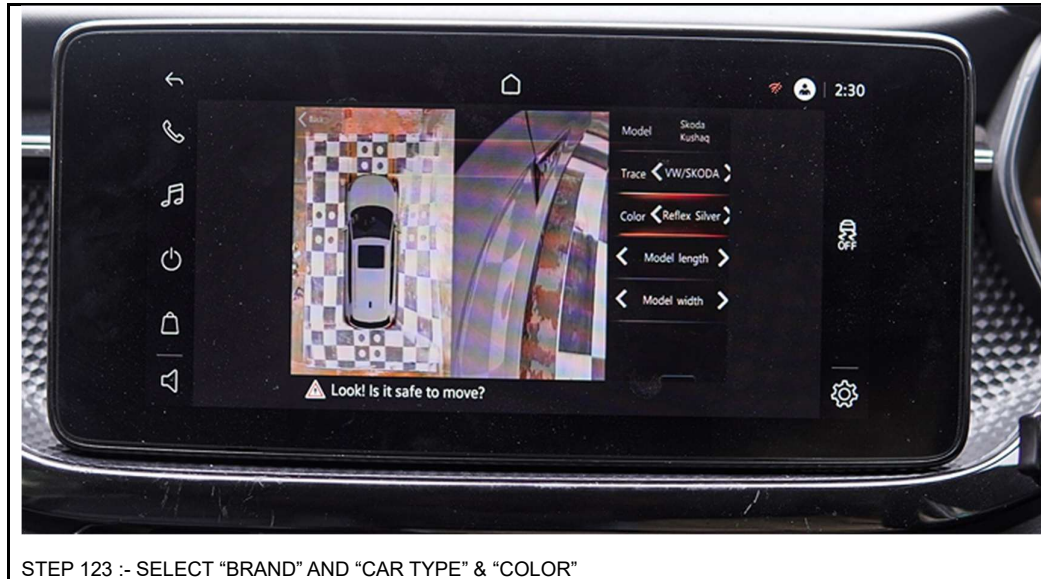
Version 01 



Distributed By :- **SKODAAUTO VOLKSWAGEN INDIA PVT LTD**

Printed in India

Version 01 



Distributed By :- **SKODAAUTO VOLKSWAGEN INDIA PVT LTD**

Printed in India



STEP 125 :- AFTER INSTALLATION OF THE 360 DEGREE CAMERA UNIT CARRY OUT THE ADAPTATION OF THE 360 DEGREE UNIT (IF AVAILABLE IN ODIS) → VEHICLE DIAGNOSTIC TESTER .

Distributed By :- **SKODAAUTO VOLKSWAGEN INDIA PVT LTD**

Printed in India

IMPORTANT STEPS FOR CALIBRATION

1. THE CALIBRATION MAT SHOULD NOT BE TORNED OR VERY DIRTY WHEN CALIBRATING, IT IS ADVISED TO PARTIALLY CLEAN THE DUST ON THE MAT BEFORE CALIBRATION
2. THE CALIBRATION MAT SHOULD NOT BE FOLDED EVEN SLIGHTEST, AS THIS WILL FAIL THE CALIBRATION PROCESS
3. THE LENGTH BETWEEN THE CAR AND MAT SHOULD BE EQUAL WHEN CHECKING IN STEP 112
4. THE MAT SHOULD NOT BE CRUMPLED OR FOLDED, SHOULD BE FLAT ALWAYS
5. YOU CAN USE SMALL STONES IN ORDER TO PREVENT THE MAT FROM FLYING ON WINDY DAYS
6. IT IS ADVISED TO CALIBRATE INDOOR TO AVOID WIND AND EXTERNAL FACTORS
7. IT IS ADVISED TO CALIBRATE IN DAYLIGHT OR BRIGHT INDOOR CONDITIONS, CALIBRATING IN DARK OR NIGHT MAY CAUSE FAILURE
8. ALL PARTS WHICH OPEN / DISMATE FOR FITMENT NEED TO BE REFITTED PROPERLY AS PER SERIES PROCEDURE
9. EXCESS WIRING HARNESS/CABLES NOT TO BE KEPT LOOSE OR OPEN ENSURE TIGHT FITMENT DONE WITH TIE CABLE TO AVOID FOULING OR RATTLING NOISE.
10. ALL CONNECTION TO BE CHECKED PROPERLY TO AVOID LOOSE CONNECTIONS (CONNECTOR TO CONNECTOR)

Distributed By :- **SKODAAUTO VOLKSWAGEN INDIA PVT LTD**

Printed in India

Version 01

